

Service
Service
Service



Service Manual



CONTENTS

Technical specification 1-2

Service measurement setup..... 1-3

Service aids 1-4

Instructions on CD playability 2-1..2-2

Disassembly diagram..... 3-1

Block diagram 4-1

Wiring diagram 4-2

CD board

 Circuit diagram 5-1..5-2

 Layout diagram..... 5-3..5-4

AMP board

 Circuit diagram 6-1

 Layout diagram..... 6-2..6-3

MCU board

 Circuit diagram 7-1

 Layout diagram..... 7-2..7-3

Key board

 Layout diagram..... 8-2..8-3

Exploded view diagram 9-1

Mechanical parts list..... 9-2

Electrical parts list..... 10-1..10-2

© Copyright 2009 Philips Consumer Electronics B.V. Eindhoven, The Netherlands
All rights reserved. No part of this publication may be reproduced, stored in a retrieval system or transmitted, in any form or by any means, electronic, mechanical, photocopying, or otherwise without the prior permission of Philips.

Published by LX 0918 Service Audio Subject to modification

3141 785 33771

Version 1.1



PHILIPS

TECHNICAL SPECIFICATION

AMPLIFIER

1 KHz
(Low channel - both channels driven)
..... 20 W per channel (8 Ω)
10 KHz
(High channel - both channels driven)
..... 20 W per channel (8 Ω)
Total output power 80 W
Signal-to-noise ratio \geq 62 dBA (IEC)
Frequency response 63 – 16000 Hz, \pm 3 dB

CD PLAYER

Frequency range 63 – 16000 Hz
Signal-to-noise ratio 65 dBA

TUNER

FM wave range 87.5 – 108 MHz
MW (AM) wave range 530 – 1700 kHz

SPEAKERS

2-way Bass Reflex System
Impedance 8 Ω
Woofer 1x100 mm
Tweeter 1x50 mm
Dimensions (w x h x d).....207 x 310 x 186 (mm)
Weight 2.6 kg (each)

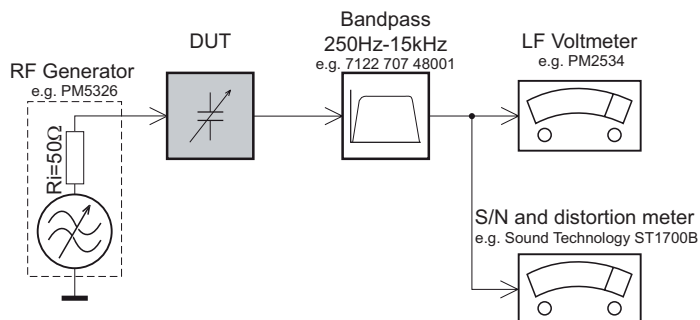
GENERAL

AC Power 110 – 127 / 220 – 240 V;
..... 50/60 Hz Switchable
Power consumption
Active 50 W
Set dimensions (w x h x d)
..... 220 x 292 x 285 (mm)
Weight (main unit) 3.83 kg
Gross weight (including packaging) 10.4 kg

Specifications and external appearance are subject to change without notice.

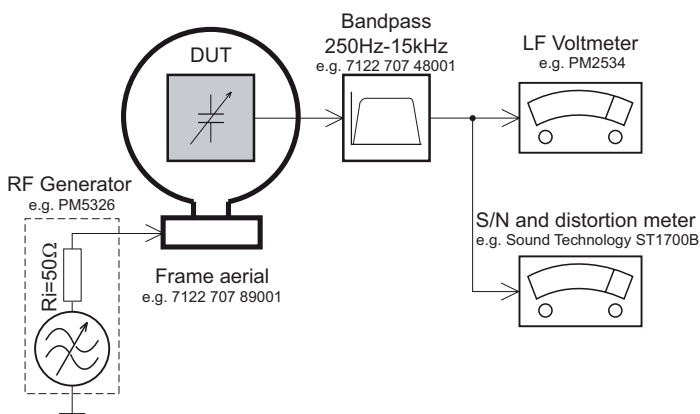
MEASUREMENT SETUP

Tuner FM



Use a bandpass filter to eliminate hum (50Hz, 100Hz) and disturbance from the pilotone (19kHz, 38kHz).

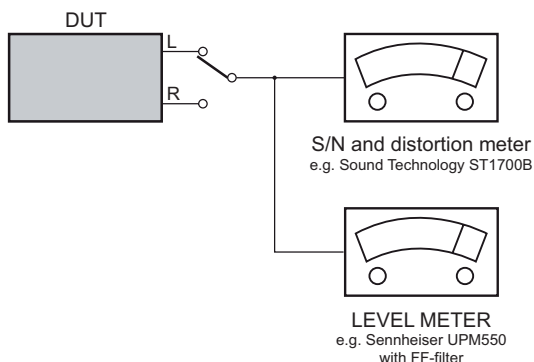
Tuner AM (MW,LW)



To avoid atmospheric interference all AM-measurements have to be carried out in a Faraday's cage. Use a bandpass filter (or at least a high pass filter with 250Hz) to eliminate hum (50Hz, 100Hz).

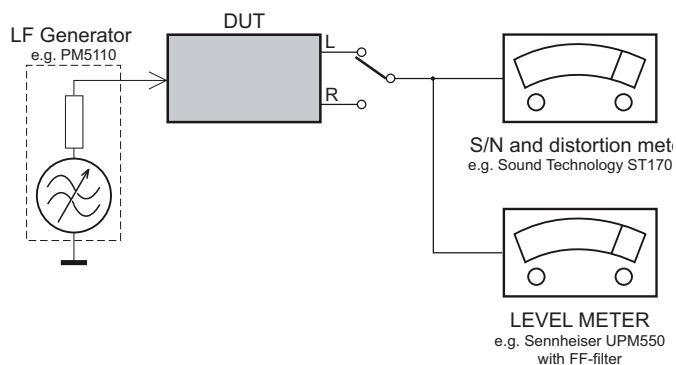
CD

Use Audio Signal Disc SBC429 4822 397 30184 (replaces test disc 3)



Recorder

Use Universal Test Cassette Cr02 SBC419 4822 397 30069 or Universal Test Cassette Fe SBC420 4822 397 30071



SERVICE AIDS

GB WARNING

All ICs and many other semi-conductors are susceptible to electrostatic discharges (ESD). Careless handling during repair can reduce life drastically.

When repairing, make sure that you are connected with the same potential as the mass of the set via a wrist wrap with resistance. Keep components and tools also at this potential.

ESD



GB

Safety regulations require that the set be restored to its original condition and that parts which are identical with those specified, be used

Safety components are marked by the symbol Δ .

**CLASS 1
LASER PRODUCT**

INFORMATION ABOUT LEAD-FREE SOLDERING

Philips CE is producing lead-free sets from 1.1.2005 onwards.

IDENTIFICATION:

Regardless of special logo (not always indicated) one must treat all sets from 1 Jan 2005 onwards, according next rules:



- On our website www.atyourservice.ce.Philips.com you find more information to:
 - * BGA-de-/soldering (+ baking instructions)
 - * Heating-profiles of BGAs and other ICs used in Philips-sets
 - * Lead free

You will find this and more technical information within the "magazine", chapter "workshop news".

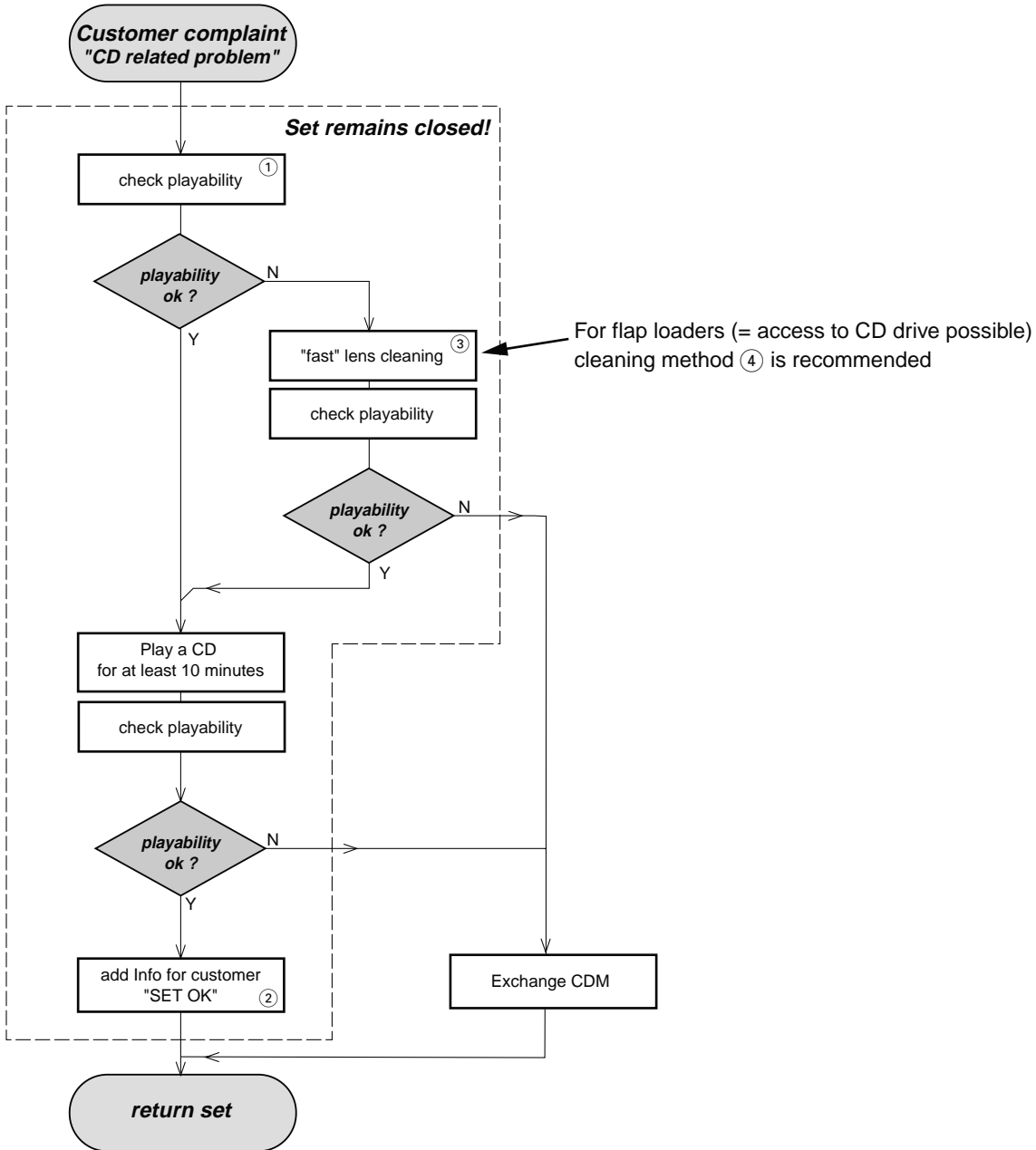
For additional questions please contact your local repair-helpdesk.

SERVICE INSTRUCTION

Safety regulations require that after a repair, the set must be returned in its original condition. Pay in particular attention to the following points:

- Route the wire trees correctly and fix them with the mounted cable clamps.
- Check the insulation of the AC Power lead for external damage.
- Check the strain relief of the AC Power cord for proper function.
- Check the electrical DC resistance between the AC Power Plug and the secondary side (only for sets which have a AC Power isolated power supply):
 1. Unplug the AC Power cord and connect a wire between the two pins of the AC Power plug.
 2. Set the AC Power switch to the "on" position (keep the AC Power cord unplugged!).
 3. Measure the resistance value between the pins of the AC Power plug and the metal shielding of the tuner or the aerial connection on the set. The reading should be larger than 4.5 Mohm (For U.S. it should be between 4.2 Mohm and 12 Mohm).
 4. Switch "off" the set, and remove the wire between the two pins of the AC Power plug.
- Check the cabinet for defects, to avoid touching of any inner parts by the customer.

INSTRUCTIONS ON CD PLAYABILITY



① - ④ For description - see following pages

INSTRUCTIONS ON CD PLAYABILITY

①

PLAYABILITY CHECK

For sets which are compatible with **CD-RW** discs
 use CD-RW Printed Audio Disc7104 099 96611
 TR 3 (Fingerprint)
 TR 8 (600µ Black dot) **maximum at 01:00**

- playback of these two tracks without audible disturbance
 playing time for: Fingerprint ≥ 10 seconds
 Black dot from 00:50 to 01:10
- jump forward/backward (search) within a reasonable time

For all other sets
 use CD-DA SBC 444A4822 397 30245
 TR 14 (600µ Black dot) **maximum at 01:15**
 TR 19 (Fingerprint)
 TR 10 (1000µ wedge)

- playback of all these tracks without audible disturbance
 playing time for: 1000µ wedge ≥ 10 seconds
 Fingerprint ≥ 10 seconds
 Black dot from 01:05 to 01:25
- jump forward/backward (search) within a reasonable time

②

CUSTOMER INFORMATION

It is proposed to add an addendum sheet to the set which informs the customer that the set has been checked carefully - but no fault was found.

The problem was obviously caused by a scratched, dirty or copy-protected CD. In case problems remain, the customer is requested to contact the workshop directly.

The lens cleaning (method ③) should be mentioned in the addendum sheet.

The final wording in national language as well as the printing is under responsibility of the Regional Service Organizations.

④

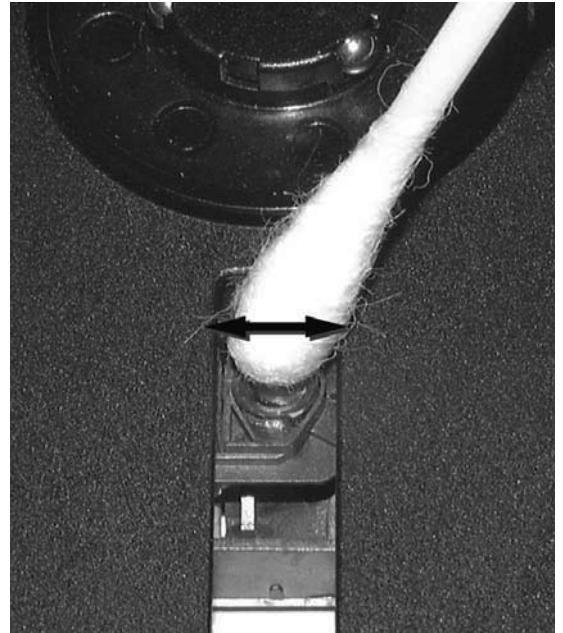
LIQUID LENS CLEANING

Before touching the lens it is advised to clean the surface of the lens by blowing clean air over it. This to avoid that little particles make scratches on the lens.

Because the material of the lens is synthetic and coated with a special anti-reflectivity layer, cleaning must be done with a non-aggressive cleaning fluid. It is advised to use "Cleaning Solvent

The actuator is a very precise mechanical component and may not be damaged in order to guarantee its full function. Clean the lens gently (don't press too hard) with a soft and clean cotton bud moistened with the special lens cleaner.

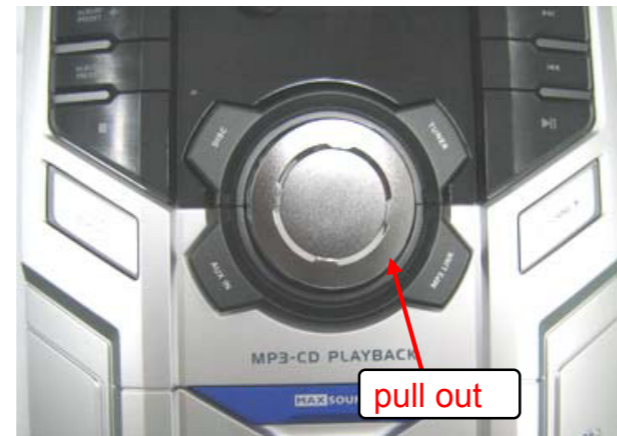
The direction of cleaning must be in the way as indicated in the picture below.



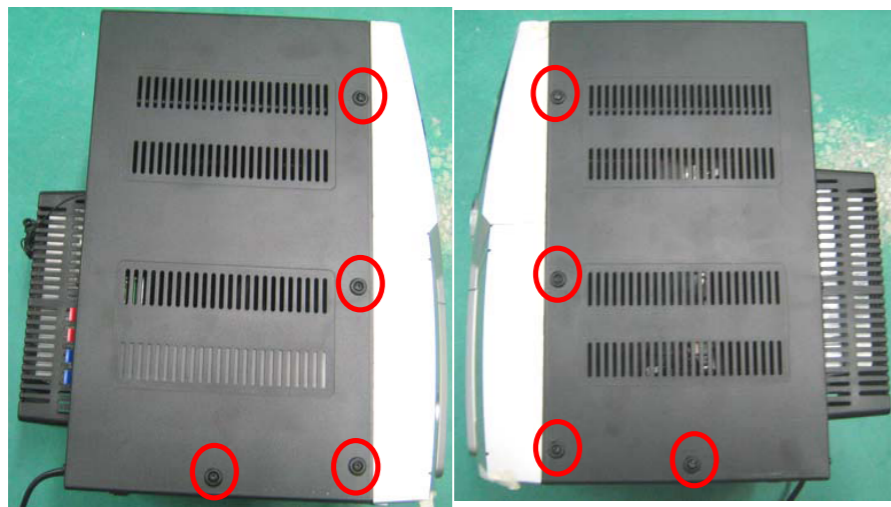
SET DISASSEMBLY DIAGRAM

- 1) a. Plug in the 220V AC power cord , set the menu to "CD" function, and press "DISC" button , Press "OPEN/CLOSE" to open CD door.
- b. Pull out CD door
- c. Press "OPEN/CLOSE" button to close the CD tray, power off the mainset and unplug the AC power cord.

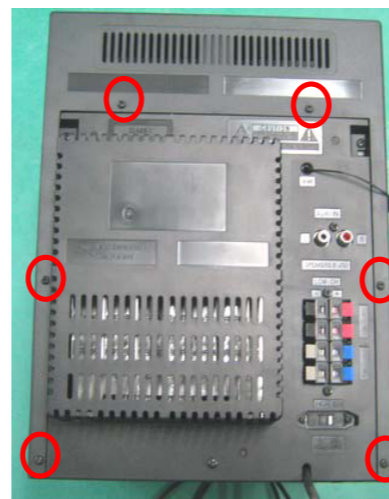
- 2) Pull the volumn buttom out.



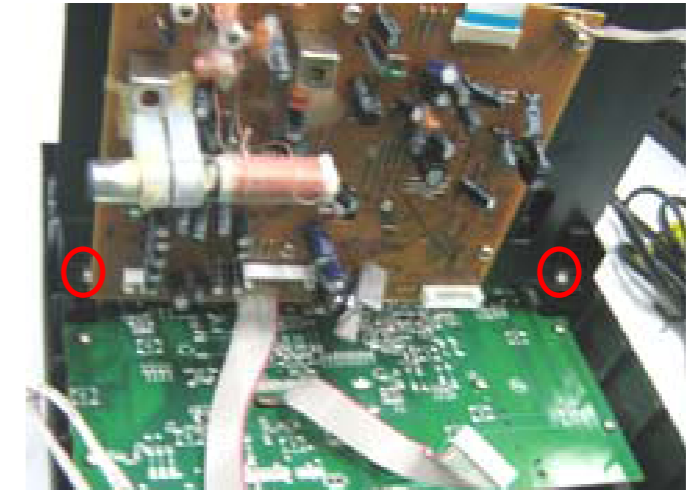
- 3) Loosen 6 screws PT3×12 and 2 screws PM3x8



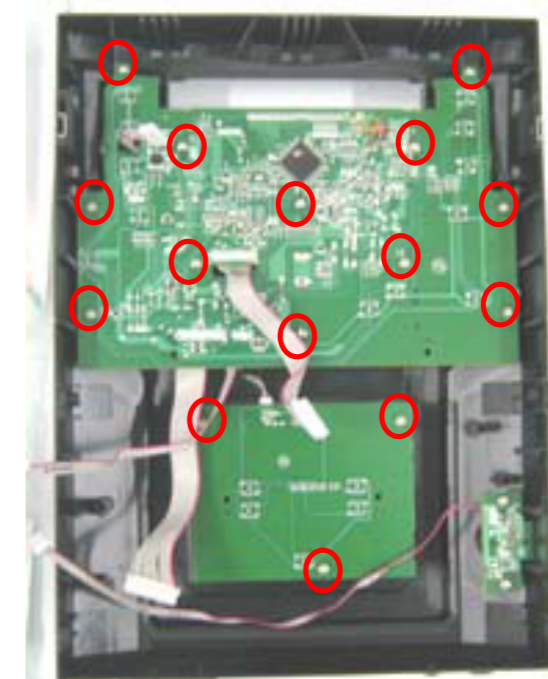
- 4) Loosen 6 screws PT3×12 .



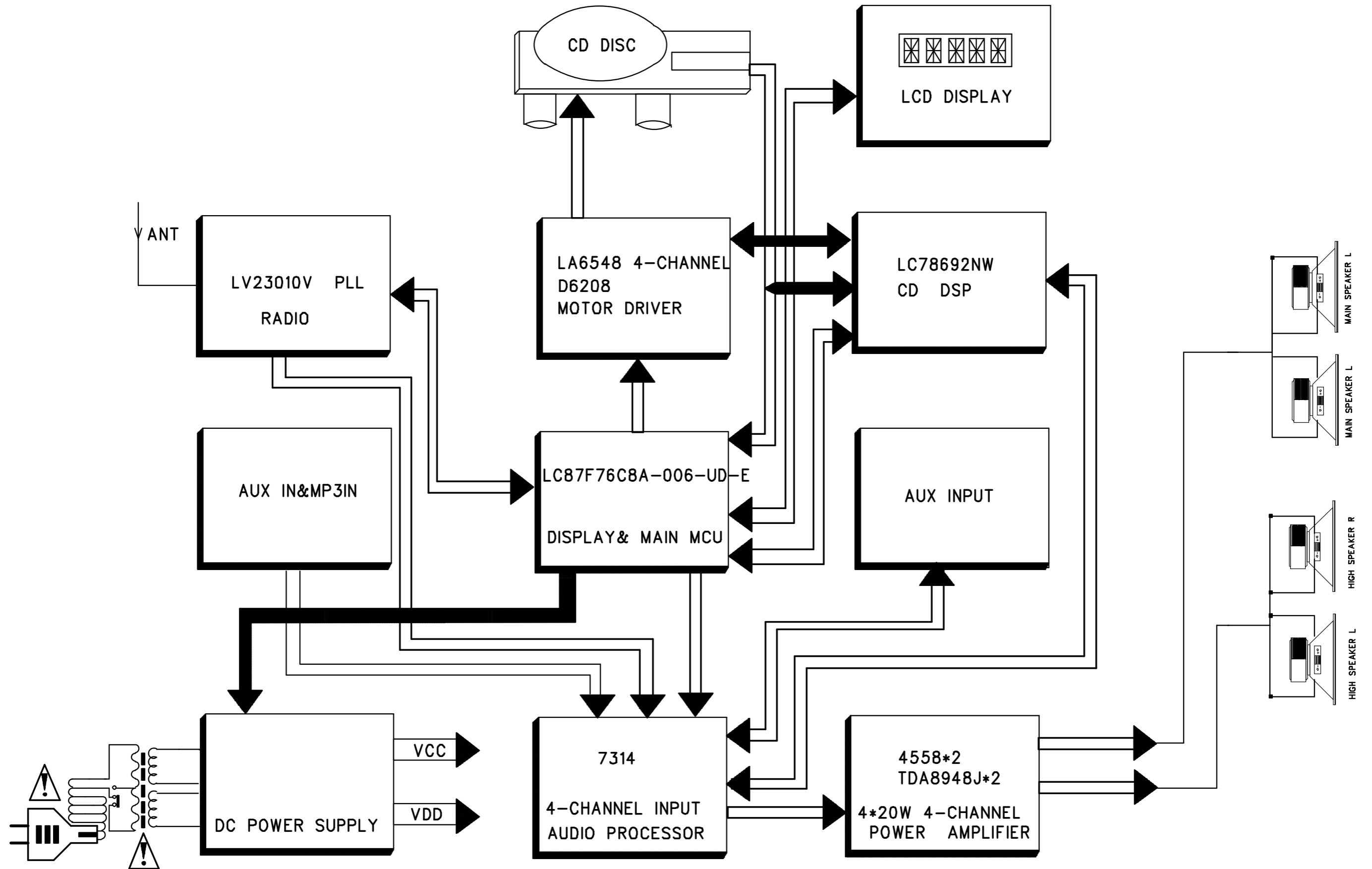
- 5) Loosen 2 screws PA3X18 to remove CD tray.



- 6) Loosen 13 screws T3×10 and 2 screws PT3x5 to remove CD board.



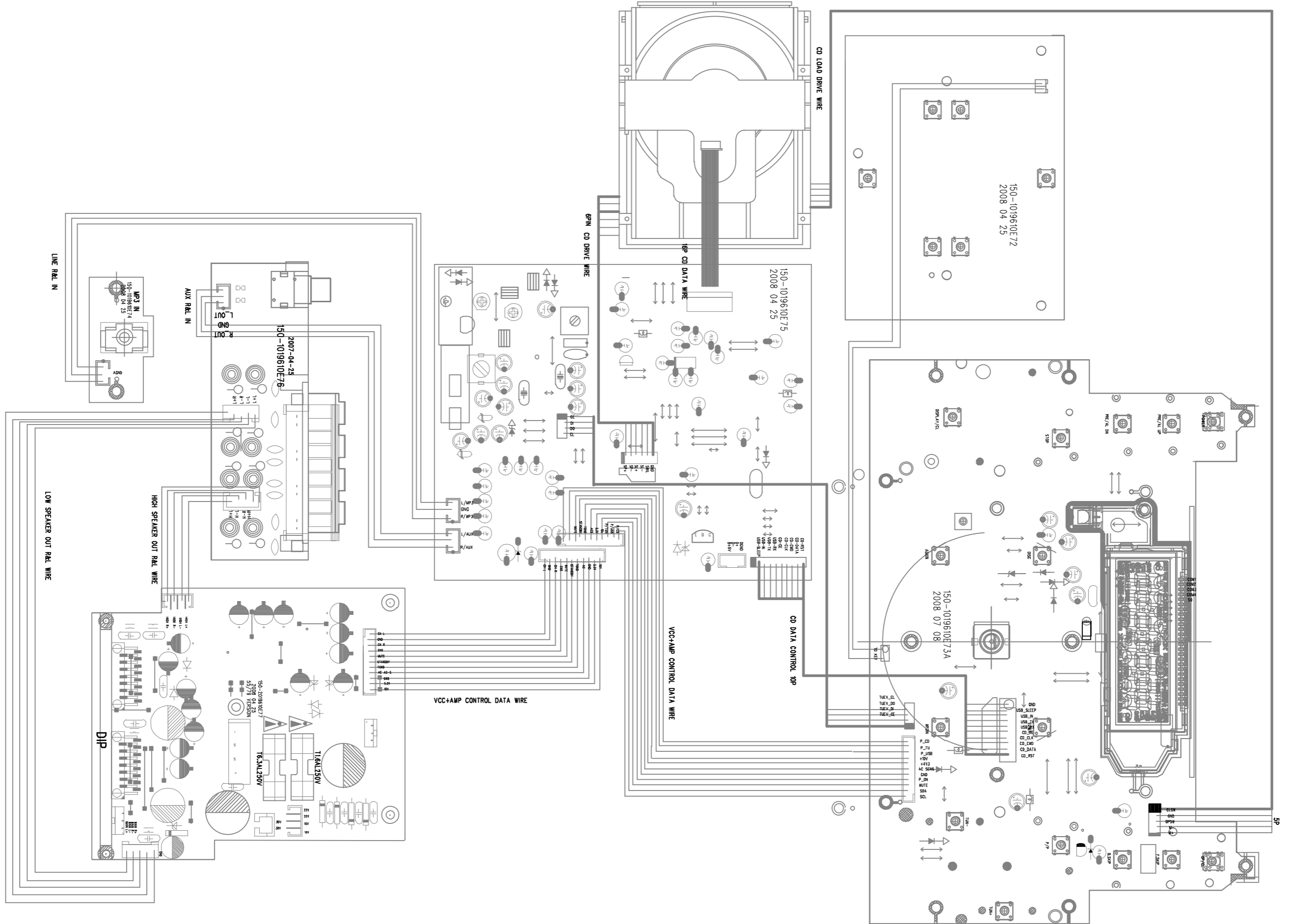
SET BLOCK DIAGRAM



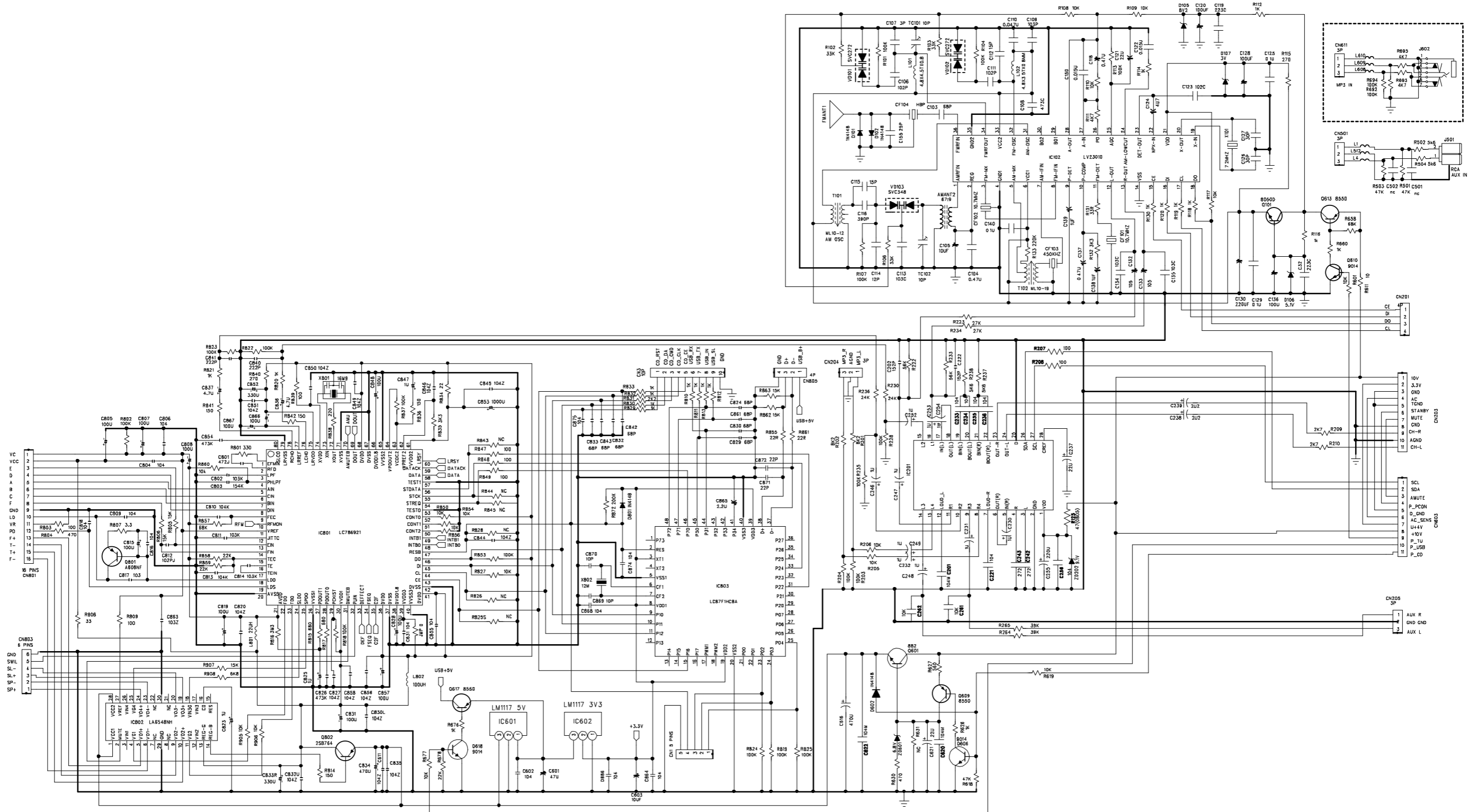
SET WIRING DIAGRAM

4 - 2

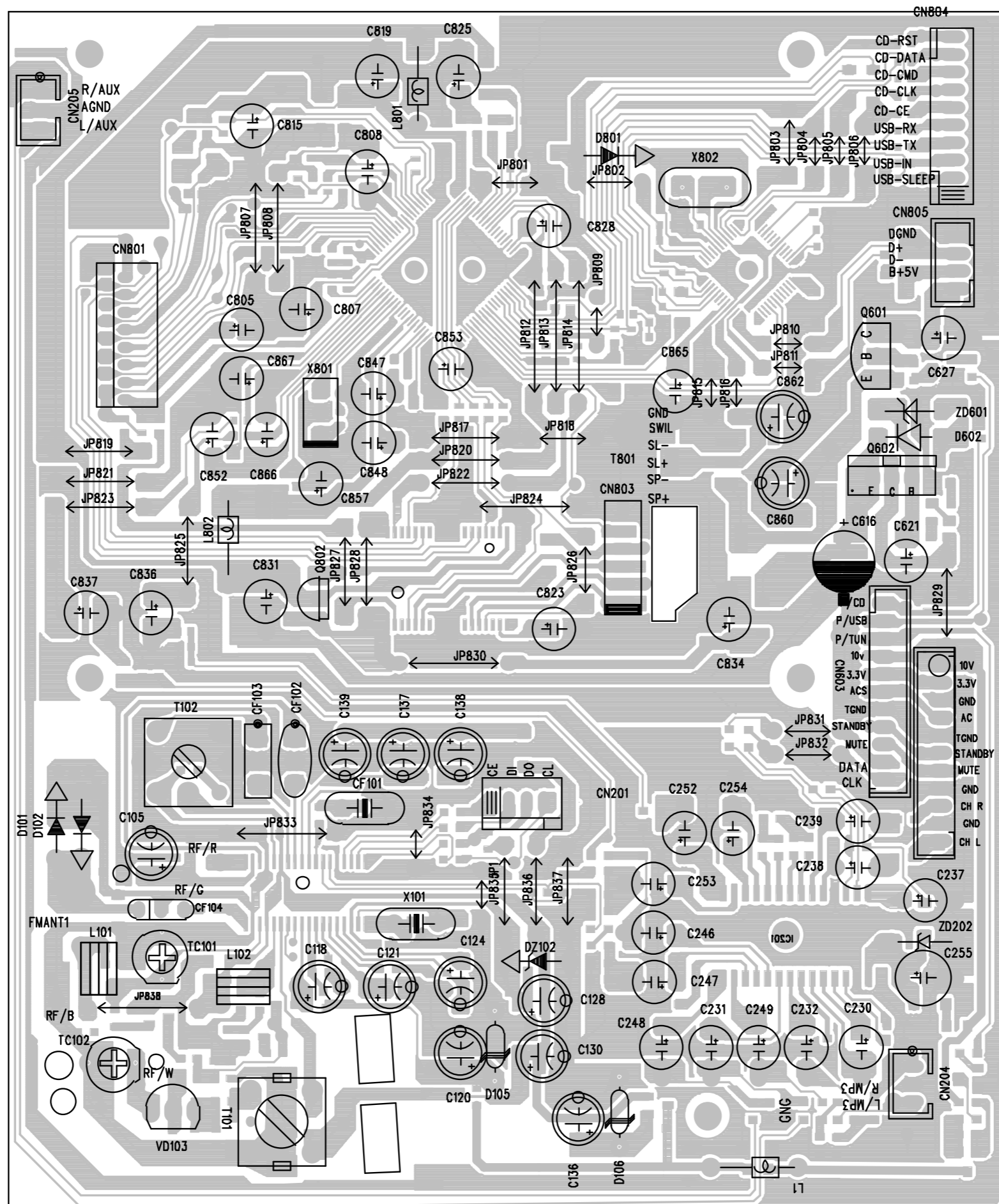
4 - 2



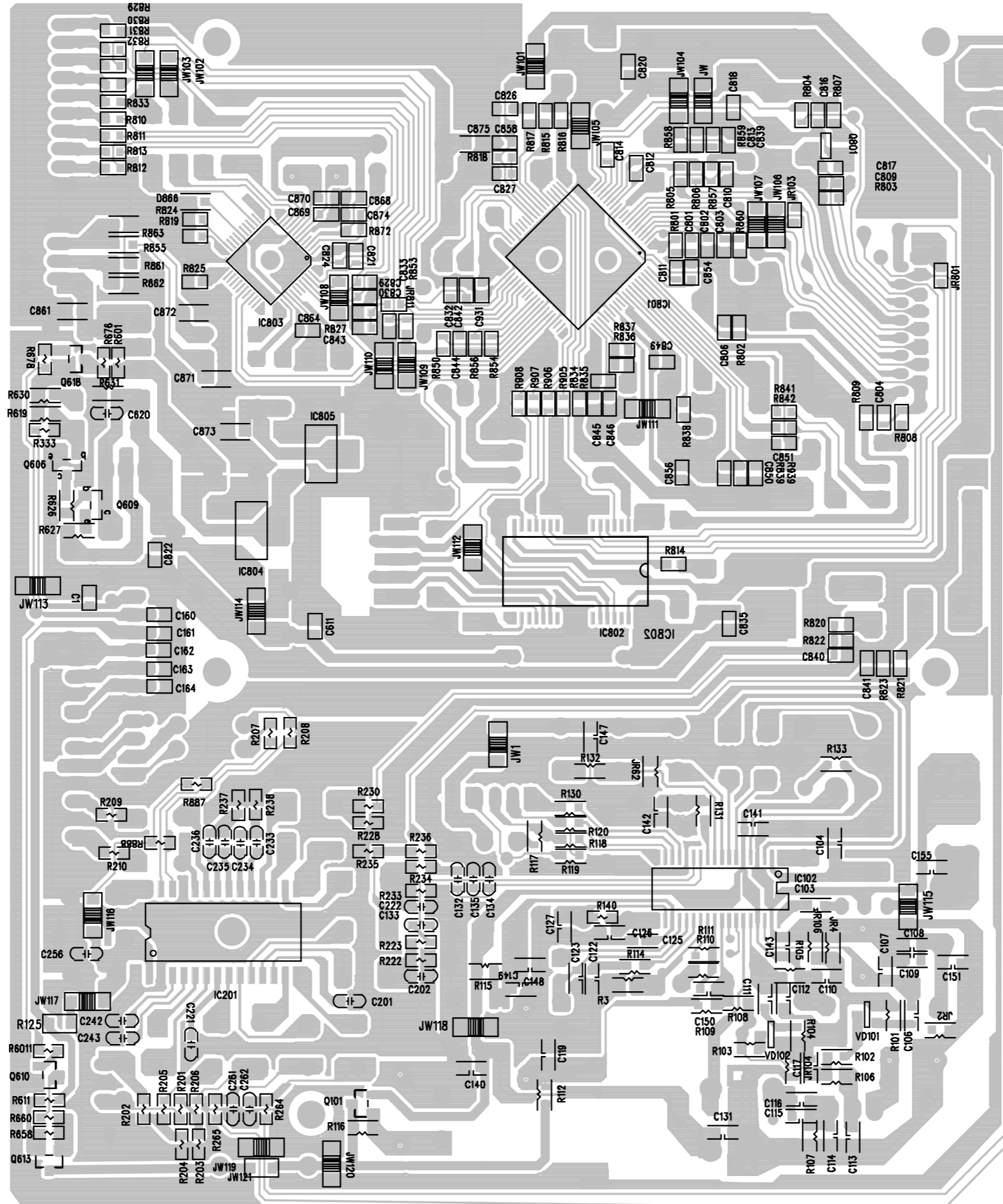
CIRCUIT DIAGRAM - CD BOARD



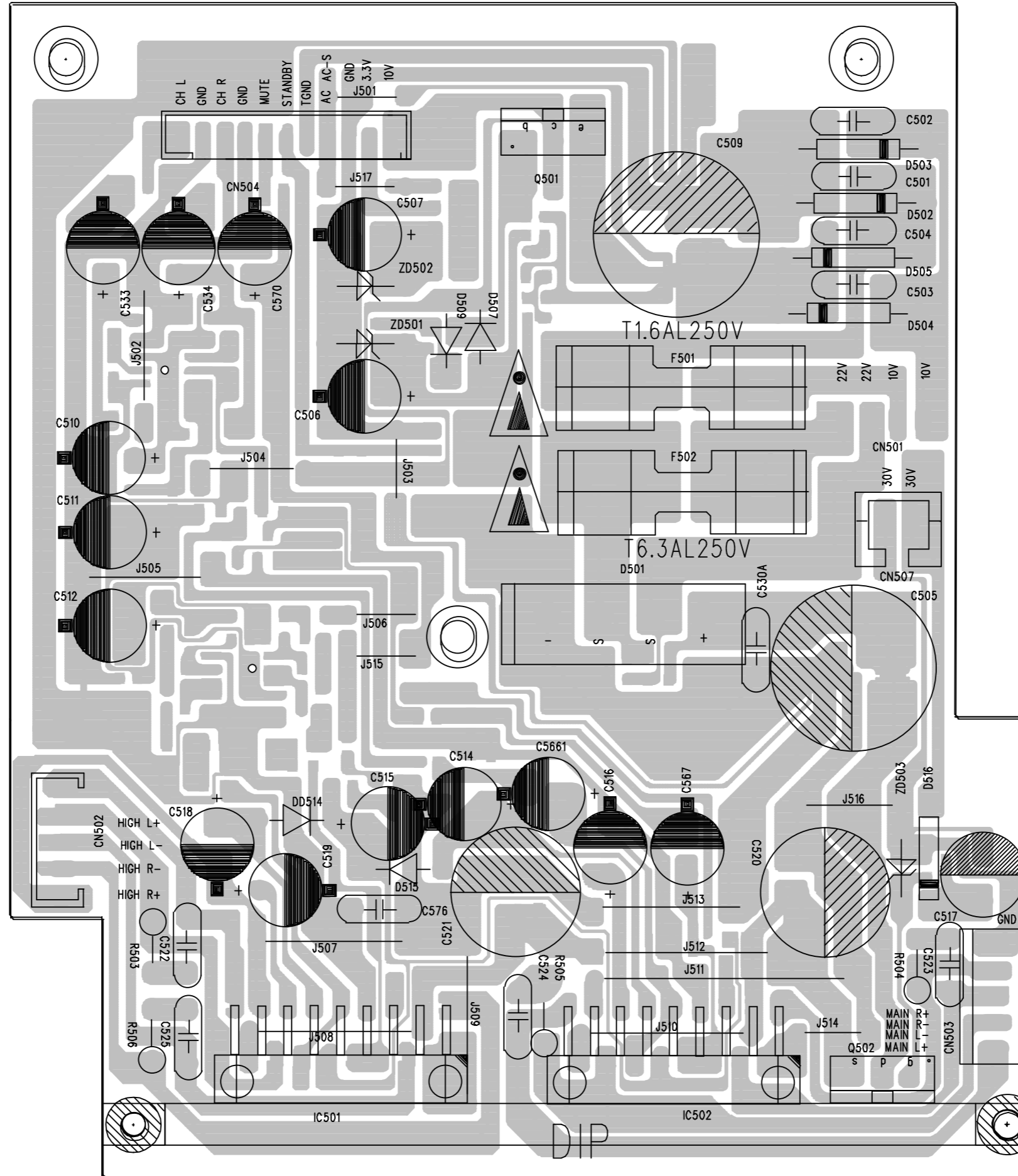
LAYOUT DIAGARM - CD BOARD COMPONENT SIDE VIEW



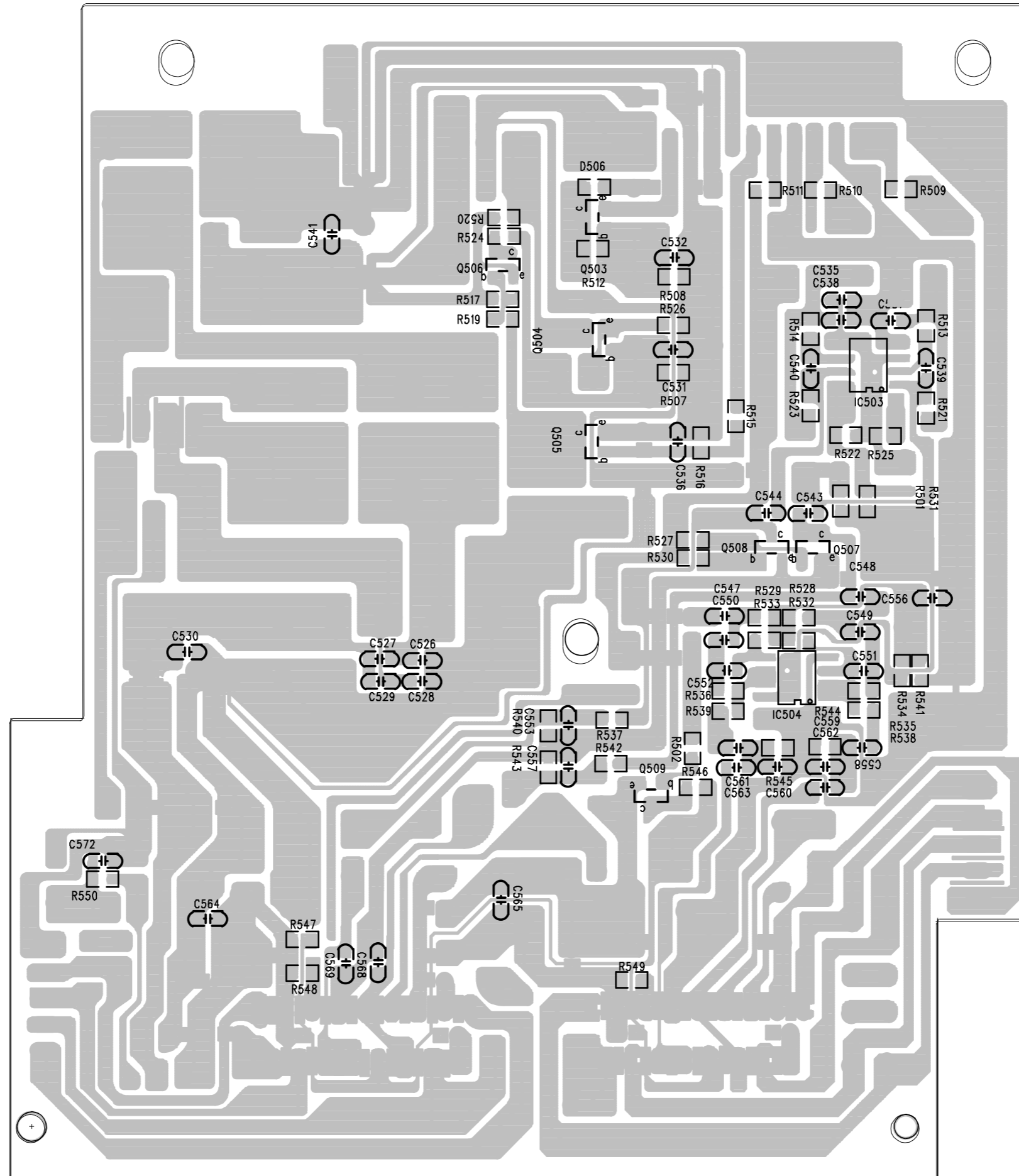
LAYOUT DIAGARM - CD BOARD COPPER SIDE VIEW



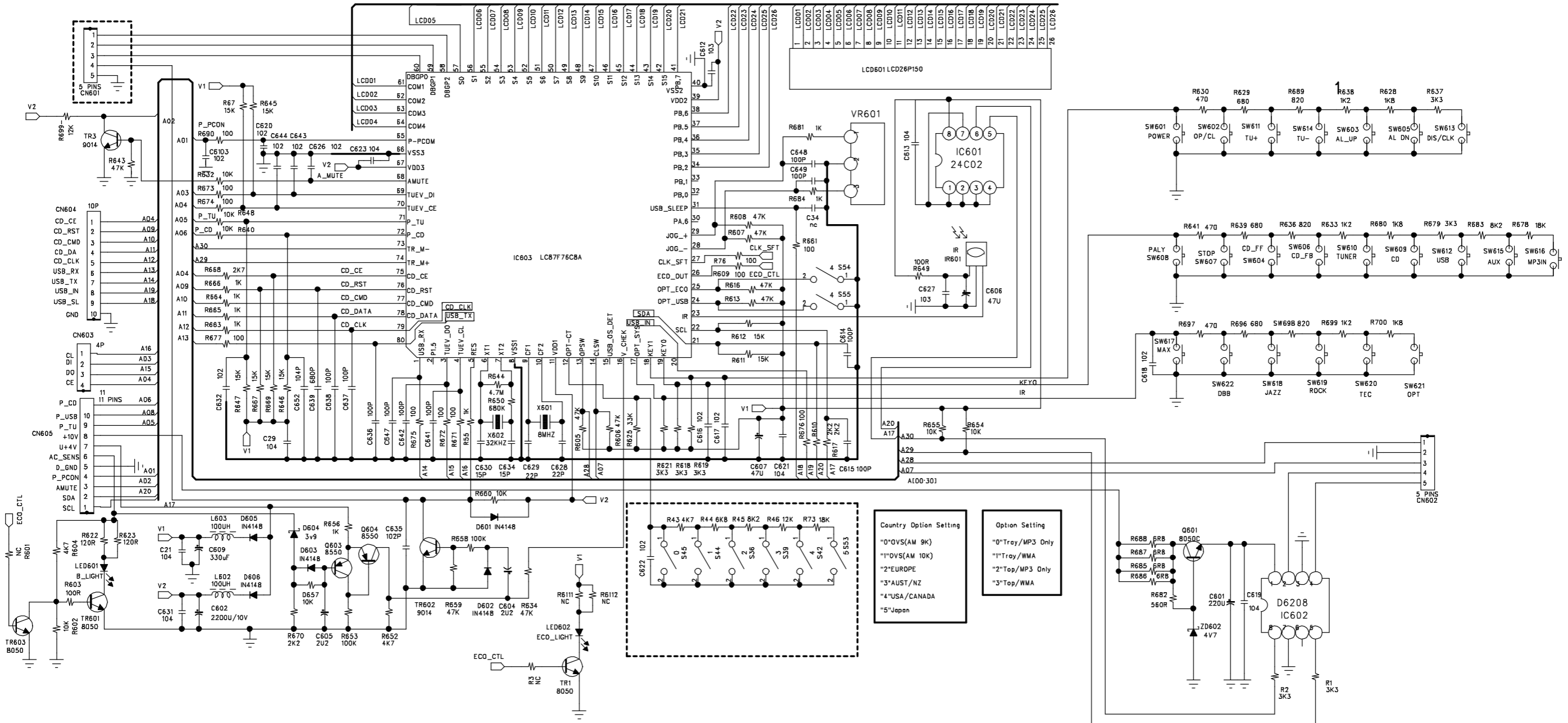
LAYOUT DIAGARM - AMP BOARD
COMPONENT SIDE VIEW



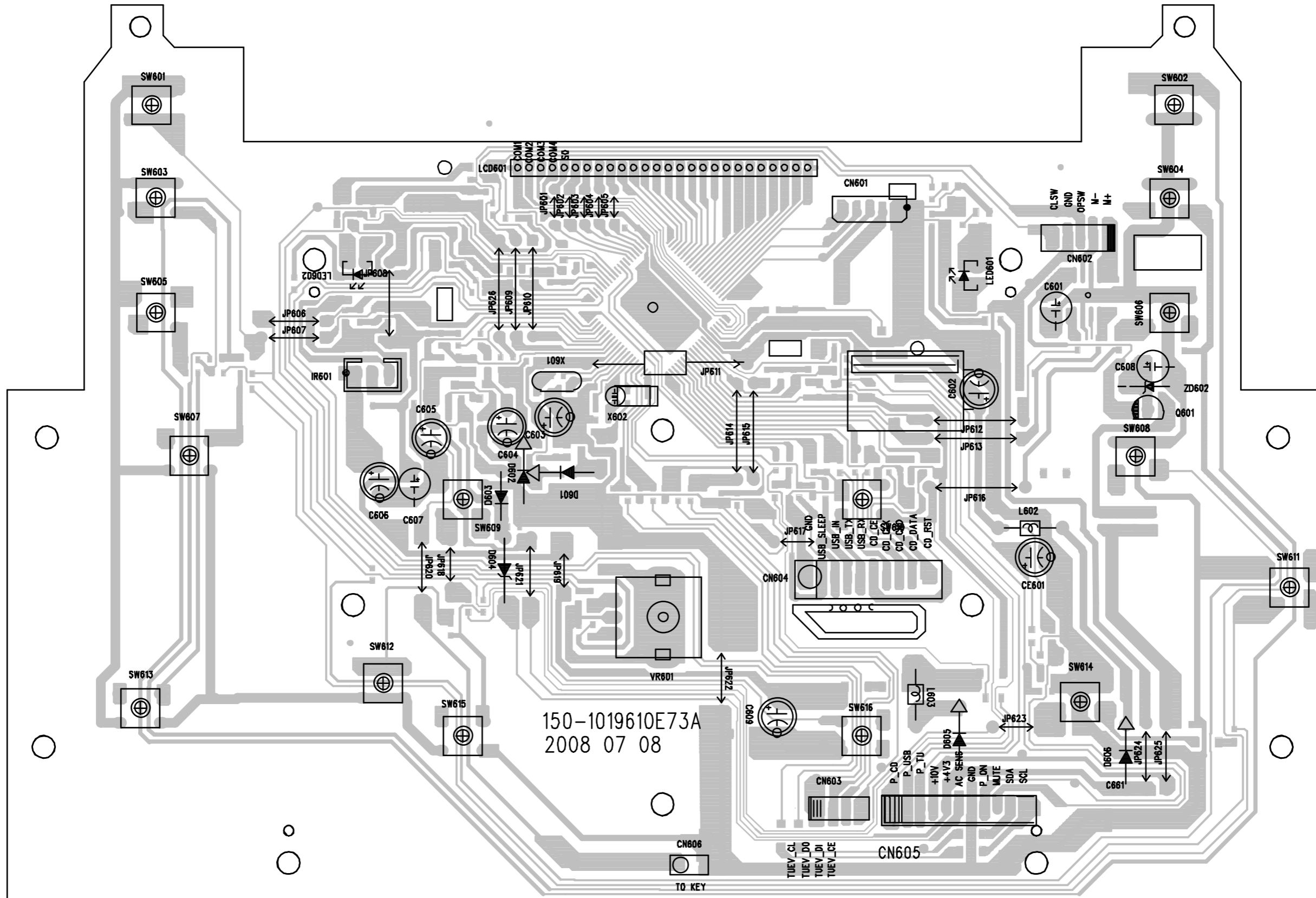
LAYOUT DIAGARM - AMP BOARD
COPPER SIDE VIEW



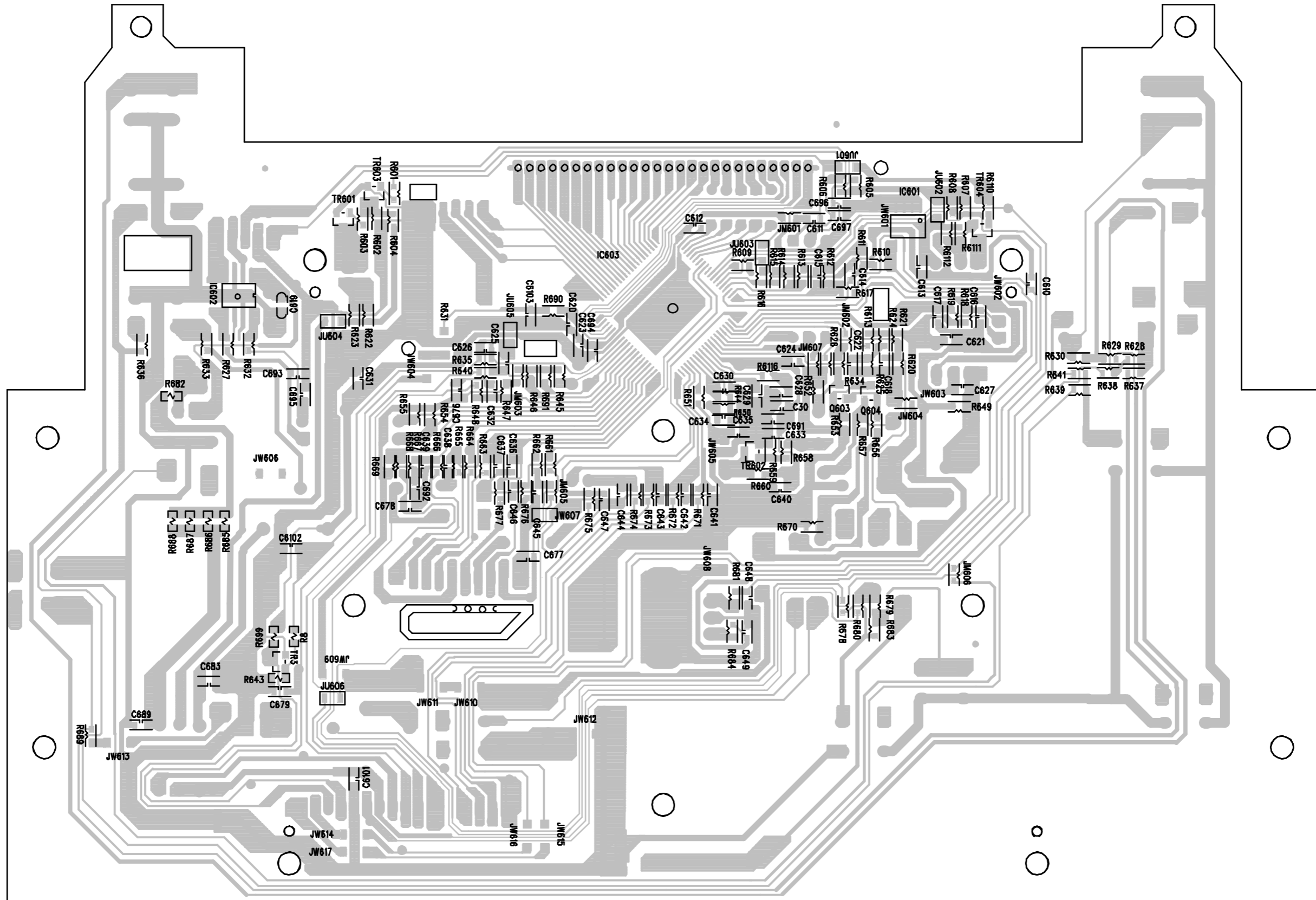
CIRCUIT DIAGRAM - MCU BOARD



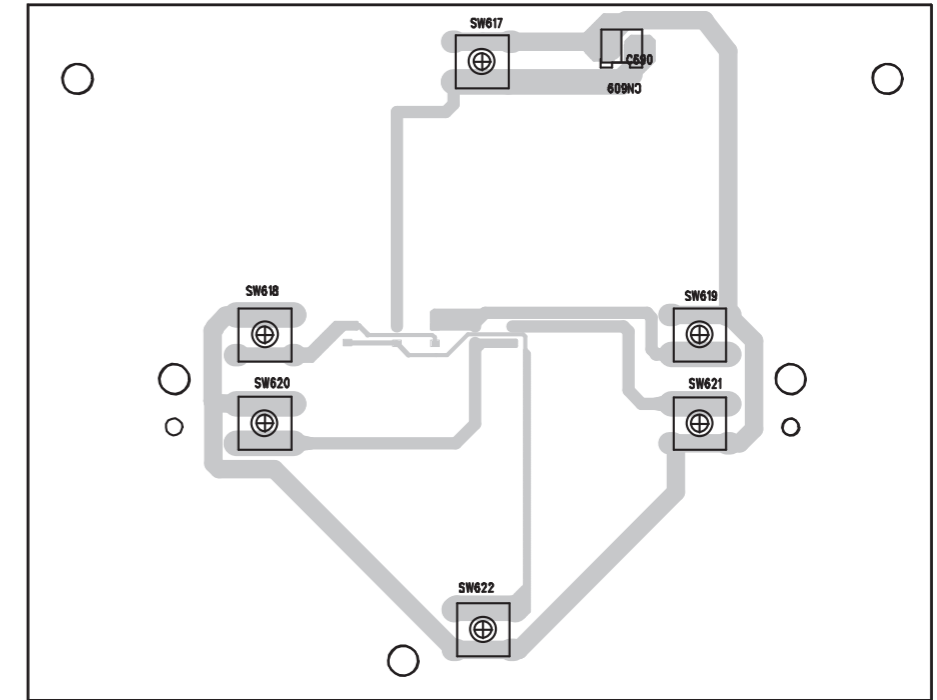
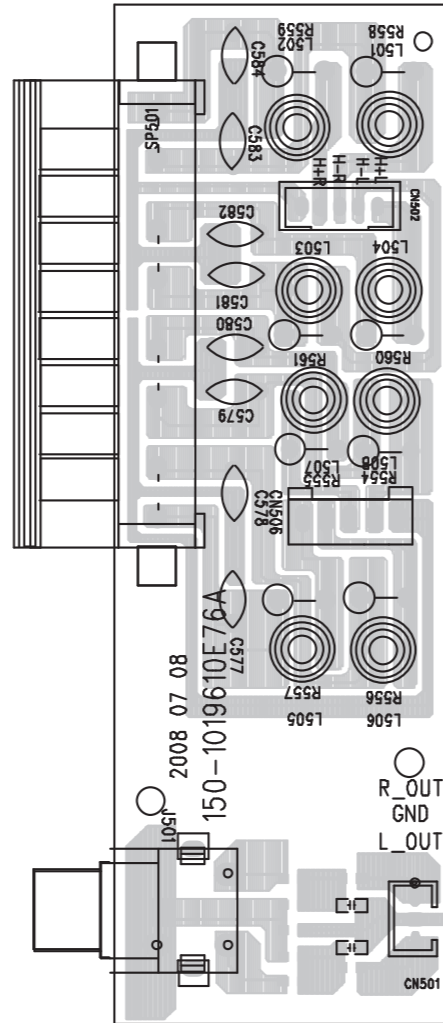
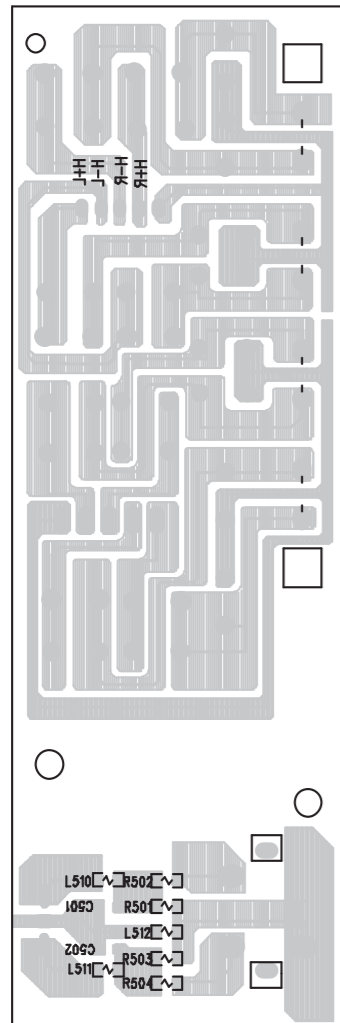
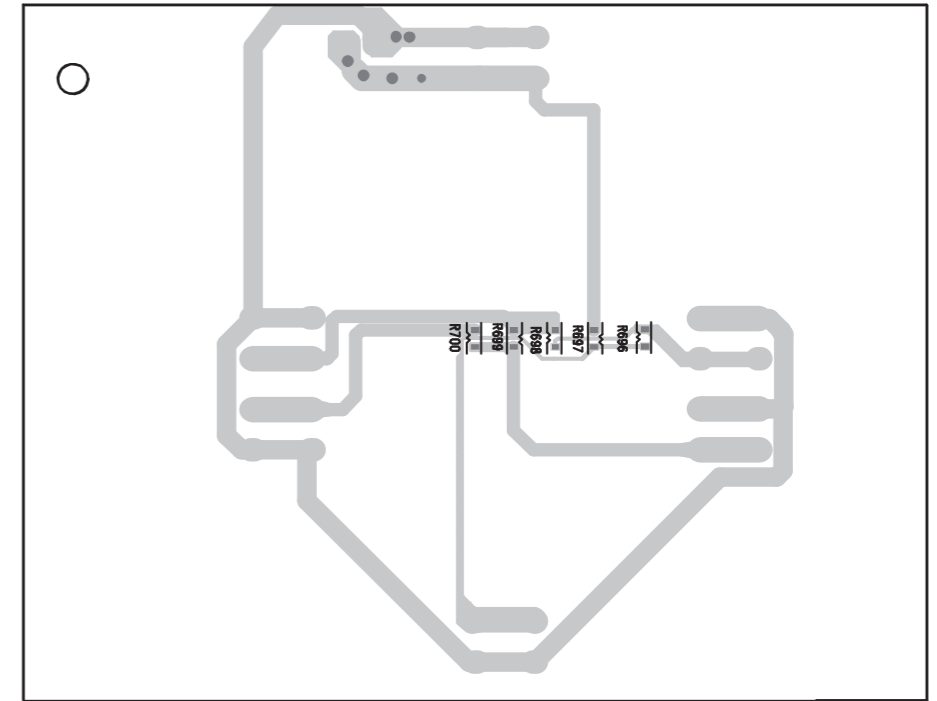
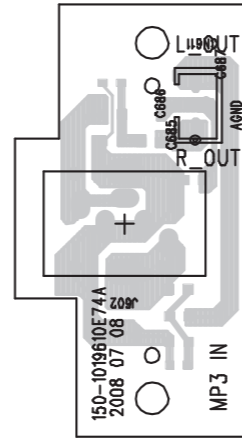
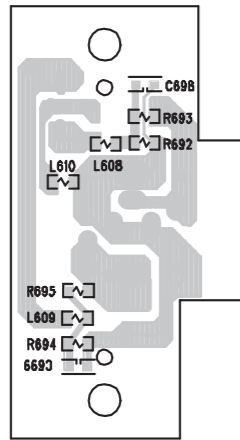
LAYOUT DIAGARM - MCU BOARD
COMPONENT SIDE VIEW



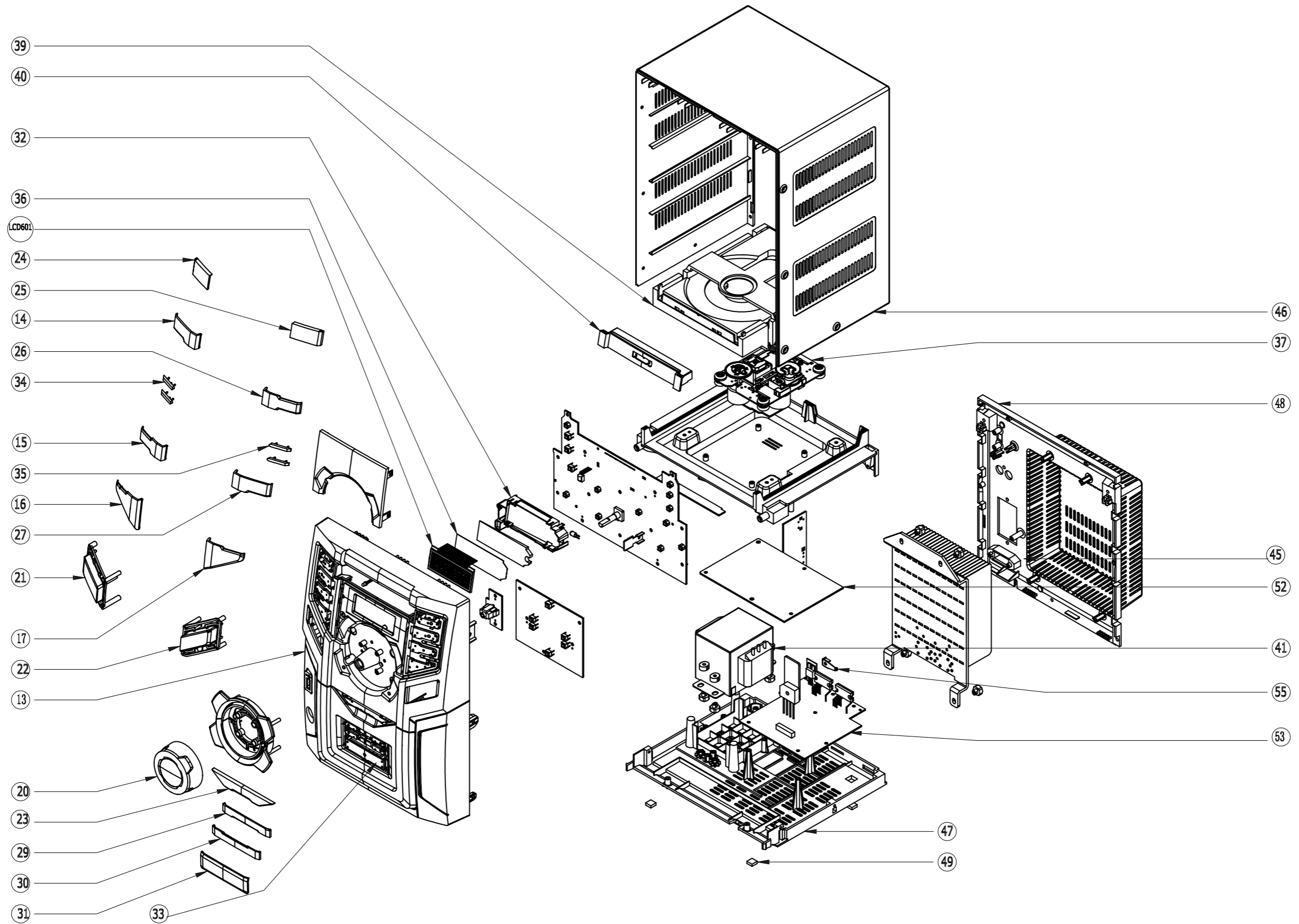
LAYOUT DIAGARM - MCU BOARD
COPPER SIDE VIEW



LAYOUT DIAGRAM - KEY BOARD



EXPLODED VIEW DIAGRAM



MECHANICAL PARTSLIST

11A	996500038820	CD LOADER WXD-8210 (COMPLETED)
14	996510020738	PRESET+ BUTTON
15	996510020744	PRESET- BUTTON
16	996510020747	STOP BUTTON
17	996510020755	PLAY BUTTON
21	996510020756	BAND BUTTON
22	996510020754	TUNING BUTTON
23	996510020739	MAX BUTTON
24	996510020746	POWER BUTTON
25	996510020745	OPEN/CLOSE BUTTON
26	996510020758	F.FWD BUTTON
27	996510020742	REW BUTTON
28	996510020751	MAX SOUND BUTTON
29	996510020752	JAZZ/ROCK BUTTON
30	996510020743	TEC/OPT BUTTON
37	996500038819	CD MECHANISM SANYO DA11VF
40	996510020748	CD DOOR
41	△ 996510018238	TRANS. UL EML662286MT
45	994000004736	SLIDE SWITCH (SSV-12-8700S)
F501	△ 994000004782	FUSE 50T D5X20 1.6A 250V(S.B.)
1A	996510007662	UL-APP 110V 3A PLUG CONVERTOR
1C	△ 996510010129	AC CORD BAXI L=1650mm (10A) EP (only for -/55)
1C	△ 996510025189	IRAM AC CORD LINE (only for -/77)
1D	996510003947	FM ANT L1500
1E	996510020749	CABLE16P FT FLEX ECTOL120P1.0

ACCESSORIES

SPK1	996510018212	SINGLE SPEAKER BOX (L)
SPK2	996510020753	SINGLE SPK BOX (R)
12	996510018213	REMOTE CONTROL
1B	996510020741	AUX WIRE 400mmW/3.5 STEREO BLK

Note: Only these parts mentioned in the list are normal service parts.

ELECTRICAL PARTSLIST**CD BOARD ASSEMBLY**

CF101	994000005187	DISCRIMINATOR J10.7C
CF102	996510015911	FLT10.7MS3 CAIQIN (RED)
CF103	996500038852	FILTER FM450AL (DOUBLE)
CF104	996500038844	FM BPF (BP87108B)
IC102	996510015912	IC LV23010V SSOP36
IC201	996510013420	IC 7314 (SOP 28P)(ANGUS)(EP)
IC801	996510002298	IC LC78692W (CD DSP) SQFP80
IC802	996500038842	IC LA6548NH (4 CH DRIVER)
Q602	996510010554	TR NPN KTD882 (TO-126) (EP)
Q606	994000004004	CHIP TR NPN 8050C
Q609	994000004005	CHIP TR PNP 8550D
Q801	994000003973	CHIP TR MMBT9015C
Q802	996500038840	TR PNP 2SB764E-SSH-AE(TP)
T101	996510015908	AM OSC RED 10mm 2928
T102	996510015907	AM IFT YEL 10mm A49
TC101	996510020759	CAP TRIMMER CTC-10PF N450
X101	996510018248	CRYSTAL 7.2MHz (HC49U)
X801	996510002297	C RESON'R QZTT16.93MX 3PINS

MCU BOARD ASSEMBLY

IC601	996510013449	IC FT24C02 (EEPROM) (SOP8)(EP)
IC602	994000004737	IC D6208 (MOTOR DRIVER) SOT8
IC603	996510020757	IC LC877696B-5AE4 QFP80(SANYO)
IR601	996510002274	SENSOR AT136BV3 (36KHz) (3.3V)
LED601	996510002275	LED WHITE D5mm (DL5NWCH)
Q601	994000004009	TR NPN 8050C
Q603	994000004005	CHIP TR PNP 8550D
SW601	994000004792	TACT SW 6X6MM H4.3
VR601	996510018244	ENCODER:EC121102X2B-HA1-137
X601	996500038823	CRYSTAL 8MHz(HC-49US)
X602	996500038822	CRYSTAL JF32.768kHz JU2x6

ELECTRICAL PARTSLIST**AMP BOARD ASSEMBLY**

F502	△ 996510002287	FUSE T6.3A 250V 5x20
IC501	996510009066	IC TDA8948J (DBS17P)(PHILIPS)
IC503	996510002294	IC D4558 (SOP8)
Q501	994000004064	POWER TR PNP KTA1046/P
Q502	996510002289	NFET BUK7535-55A
Q503	994000004004	CHIP TR NPN 8050C
Q505	994000003972	CHIP TR MMBT9014C
Q506	994000004005	CHIP TR PNP 8550D

KEY BOARD ASSEMBLY

SW617	994000004792	TACT SW 6X6MM H4.3
-------	--------------	--------------------

LINE IN BOARD ASSEMBLY

J602	996510002273	ST PHONES JACK 3.5mm TC38
------	--------------	---------------------------

AMP EXPORT BOARD ASSEMBLY

J501	996510006430	AUX RCA JACK (RCA-207)(RED/WHT
SP501	996510002296	SPEAKER TERMINAL 8POSITION

Note: Only these parts mentioned in the list are normal service parts.